

# SmartCam T1025



## Jetson Orin™ Nano Supercharged AI Camera



### Features

- Supports NVIDIA® Jetson™ Orin™ Nano module
- All-in-one design in compact form factor
- Expansion slots for 4G and storage functions
- Suitable for AIoT gateways, general AI applications



### Specifications

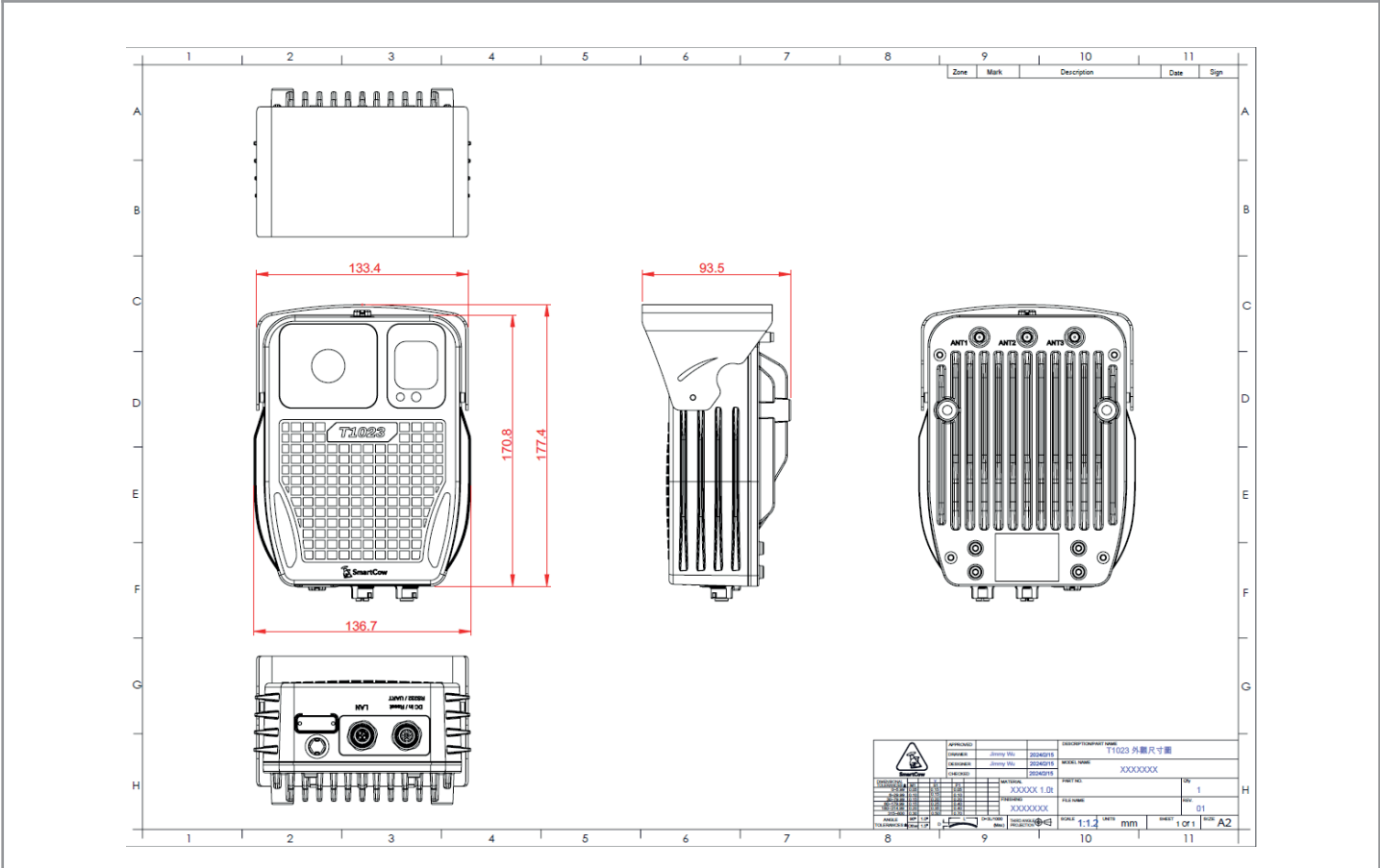
<b>General</b>	Orin Nano 8GB	CPU 6-core Arm® Cortex®-A78AE v8.2 64-bit CPU 1.5MB L2 + 4MB L3 GPU 1024-core NVIDIA Ampere architecture GPU with 32 Tensor Cores Memory 8GB 128-bit LPDDR5 68 GB/s
	BSP	Jetpack 6.0
	Storage	256GB NVMe, operating temperature from -40°C to 85°C
	Power input	12V DC input with DC Jack
	Certification	CE, FCC, LVD, RoHS, REACH
<b>Physical I/O</b>	Power/Reset	1x DC Jack and reset button (M12 connector)
	Serial port	1x RS232 or UART (Optional, leverage above M12 connector)
	Ethernet	1x LAN port with GBE 10/100/1000M (M12 connector)
	SIM Slot	1x Nano SIM slot
	SMA (Male)	2x SMA connectors for 4G LTE antennas 1x SMA connector for GNSS antenna
	Power LED	1x Power LED indicator
	Waterproof Valve	2x IP65 valve
<b>Infrared LED</b>	Peak Wavelength	850nm
	Radiant Distance	10m
<b>Wireless Network</b>	4G / GPS	Support 4G LTE module
<b>Environment</b>	Operating Temp.	-20°C ~+50°C
	Storage Temp.	-40°C ~+85°C
	Storage Humidity	95% @ 40 °C (non-condensing)
	IP Protection	IP65

<b>Mechanical</b>	Dimension	136.7x93.5x177.4mm (LxWxH) (without wall mount bracket and the antenna)
	Weight	1kg
	Installation	Wall mount, Pole mount

### Camera

Specification		IMX335 (Rolling shutter)
<b>Image Sensor</b>	Image Sensor	SONY
	Max. Image Resolution	2560H x 1920V
	Max. Frame Rate	30fps(2560x1920)
	WDR	HDR
	Day/Night Mode	Day/Night/Auto
<b>Lens</b>	Effective Focal Length	3mm
	Field of View	D140.7°xH107°xV77.8°
	Focus Control	Fixed M12 Lens
	Aperture	F2.0
	Iris Control	Fixed type

### Mechanical



## Ordering Information

Model Name	Description
T1025-RN08-IMX335	T1025 w/ Orin Nano 8GB, 256G NVMe SSD, 12V DC, 60W Adapter, -20~50°C

## Packing List

Item	Description	Qty
AI camera	Main unit	1
Antenna	Combo antenna for LTE and GPS	1
Adapter	12V 5A, 60W	1
Power cord	US, EU or UK version	1
Power & reset cable	M12 cable with DC Jack and reset button	1
Ethernet cable	M12 cable with RJ45 port	1
Camera bracket	Wall mount bracket	1

## Accessories (Optional)

Part Number	Description
1Y0701800200LI	US Power Cord
1Y0701800100LI	EU Power Cord
1Y0701830400HY	UK Power Cord
TBD	M.2 B-key 3042 LTE module: Quectel EM060K-EA
TBD	M.2 B-key 3042 LTE module: Quectel EM060K-NA
TBD	M12 cable with DB9 port
TBD	M12 cable with UART signal
1M1200004B0000	Pole mount bracket